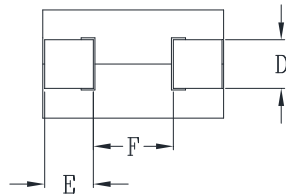
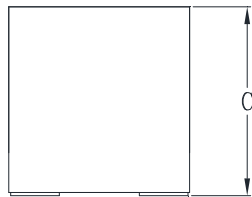
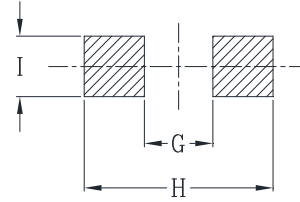
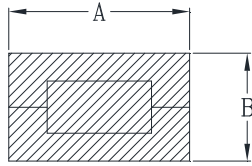


CYNTEC CO., LTD.

乾坤科技股份有限公司

HCUBE9610(F) Series

Mechanical dimensions



Suggested PWB Layout

UNIT : mm
 A = 9.6 MAX
 B = 6.4 MAX
 C = 10.0 MAX
 D = 2.6
 E = 2.6
 F = 3.9
 G = 3.4
 H = 9.9
 I = 3.1

Electrical Characteristics @ 25°C, 100kHz, 1V

| Delta P/N | L ¹ (nH) | Li (nH) MIN | DCR (mΩ) | Isat ² (A) | | | Ir ³ (A) |
|----------------|------------------------|-------------------|-------------|--------------------------|-------|-------|------------------------|
| | | | | 25°C | 100°C | 125°C | |
| HCUBE9610-700 | 70 | 50 | 0.15 ± 10% | 170 | 138 | 127 | 67 |
| HCUBE9610-101 | 100 | 72 | | 120 | 98 | 90 | |
| HCUBE9610-121 | 120 | 86 | | 98 | 80 | 73 | |
| HCUBE9610-151 | 150 | 108 | | 78 | 63 | 59 | |
| HCUBE9610-181 | 180 | 129 | | 64 | 52 | 48 | |
| HCUBE9610-221 | 220 | 158 | | 52 | 42 | 39 | |
| HCUBE9610-271 | 270 | 194 | | 41 | 33 | 30 | |
| HCUBE9610-301 | 300 | 216 | | 37 | 30 | 27 | |
| HCUBE9610-331 | 330 | 237 | | 33 | 27 | 24 | |
| HCUBE9610F-700 | 70 | 50 | 0.15 ± 10% | 162 | 138 | 127 | 67 |
| HCUBE9610F-101 | 100 | 72 | | 118 | 100 | 90 | |
| HCUBE9610F-121 | 120 | 86 | | 98 | 83 | 73 | |
| HCUBE9610F-151 | 150 | 108 | | 76 | 65 | 59 | |
| HCUBE9610F-181 | 180 | 129 | | 62 | 53 | 48 | |
| HCUBE9610F-221 | 220 | 158 | | 49 | 42 | 39 | |
| HCUBE9610F-271 | 270 | 194 | | 39 | 33 | 30 | |
| HCUBE9610F-301 | 300 | 216 | | 35 | 30 | 27 | |
| HCUBE9610F-331 | 330 | 237 | | 32 | 27 | 24 | |

1. Tolerance of inductance : ± 15% for 70nH, ± 10% for other parts.
2. Isat is the DC current which causes the inductance drop to Li.
3. Ir is the DC current which causes the surface temperature of the part increase approximately 40 °C.
4. Operating temperature: -40°C to 125°C (Self-temperature rise included).